

Hessequa Municipality



**MUNICIPAL SUPPLY CHAIN MANAGEMENT
INVITATION TO SUBMIT CLOSED QUOTATION
THE CONSTRUCTION OF A STORE ON ERF 280 IN GOURITSMOND**

RQ Nr: 58782

23 March 2018

Dear Sir/Madam

Please provide a written quotation for the supply of goods and / or services as detailed in the list attached.

The quotation must be submitted, on the official letterhead of your business, by the one of the following means for the attention of Ms Carisha Prins

- Email carisha@hessequa.gov.za
- Per Hand at the Hessequa Municipality SCM offices, Post Office Building, 19 Main Road, Riversdale, 6670

**QUOTATIONS MUST REACH THE MUNICIPALITY BEFORE OR AT 12:00 ON 03 APRIL 2018
NO LATE QUOTATIONS WILL BE CONSIDERED**

The following conditions will apply to all quotations:

- Prices quoted must be firm, inclusive of VAT and where applicable for delivery to the address indicated below. The total amount of the quotation must also be clearly indicated;
- Please refrain from quoting on goods that are out of stock or not usually stocked by your company, or indicate on your quotation that this is the case and what the delivery period on those items will be;
- If your quotation is accepted, goods and/or services must be supplied and delivered to the below mentioned address, accompanied by your delivery note and invoice (if possible);
- Quotations must to be valid for a period of 30 days;
- The delivery period must be indicated.

- The closed quotation is subjected to the General Conditions of Contract as contained in MFMA Circular 25 of 2005 and the conditions contained in Hessequa Municipal SCM POS section 3.2.4.
- If a quotation is submitted for the goods; services or works requested, you the supplier accepts the conditions of this quotation and that the goods; services and works will be supplied or constructed as per this quotation.
- A formal order will be issued to the successful supplier that will be a written instruction to the supplier to supply; deliver or construct as per specifications contained in this quotation.
- If a quotation are called for a specific number of items, Council reserves the right to change the number of such items to be higher or lower. The successful quotationer will then be given an opportunity to evaluate the new scenario and inform the Municipality if it is acceptable. If the successful quotationer does not accept the new scenario, it will be offered to the second-placed quotationer. The process will be continued to the Municipality's satisfaction.

If your quotation does not comply with above stated conditions, your quotation will not be considered.

If you have not received a response from the Municipality within thirty (30) days after the closing date of the quotation, please regard your quotation as unsuccessful. Should you be interested in wanting to know to who the successful bidder was, you may consult our website at www.hessequa.gov.za where monthly reports on awards will be published.

Quotations will be evaluated and adjudicated in terms of the Preferential Procurement Policy Framework Act (Act 5 of 2000), The Preferential Procurement Regulations,2017 and the Hessequa Municipality's Supply Chain Management Policy, for which 80 points will be allocated in respect of price and 20 points in respect of B-BBEE contribution.

It is estimated that prospective suppliers should have a CIDB contractor grading of 1GB higher

The Municipality reserves the right to withdraw any invitation for closed quotations and/or to re advertise or to reject any quotation or to accept a part of it. The Municipality does not bind itself to accepting the lowest quotation.

Any Prospective Service Provider must make sure that they are registered and are valid on the Database of Hessequa Municipality and/or on the Centralised Supplier Database (CSD) and that they are in possession of a Valid Tax Clearance Certificate.

Please address any technical enquiries regarding the specifications to Mr Werner Mahno
Tel: 028 713 7364 or any Supply Chain Management related enquiries to Ms Carisha Prins at
Tel: 028 713 7974.

A compulsory clarification meeting will be held on at the following:

PLACE	TIME	DATE
<u>ERF 280, VOORTREKKER STREET GOURITSMOND</u>	11:00 AM	TUESDAY 27 MARCH 2018

The stipulated minimum threshold percentages for local production and content for steel products is provided below:

<u>Steel construction Material</u>	<u>Components</u>	<u>Local Content Threshold</u>
Fabricated structural steel	Steel columns, Y10 steel rods, steel rafters	100%
Joining/connecting components	Gussets, cleats, stiffeners, splices, cranks, kink, doglegs, spacers, tabs and brackets	100%
Fasteners	Bolts, nuts, rivets and nails	100%
Sheets	IBR sheeting	100%

- (i) The exchange rate to be used for the calculation of local production and content must be the exchange rate published by the South African Reserve Bank (SARB) at 12:00 on 28 March 2018; and

Only the South African Bureau of Standards (SABS) approved technical specification number SATS 1286:2011 must be used to calculate local content

Important note: a valid original or certified B-BBEE certificate must be submitted with the documentation. (MBD 6.1 Preference Points Claim form need to be completed to claim points. NB- Only points claims will be awarded. The MBD 6.1 is available from the municipal website at www.hessequa.gov.za under the tab SCM INFO AND REPORTS or at the Supply Chain Management offices at Post Office Building, 19 Main Road, Riversdale.)

DECLARATION CERTIFICATE FOR LOCAL PRODUCTION AND CONTENT FOR DESIGNATED SECTORS

This Municipal Bidding Document (MBD) must form part of all bids invited. It contains general information and serves as a declaration form for local content (local production and local content are used interchangeably).

Before completing this declaration, bidders must study the General Conditions, Definitions, Directives applicable in respect of Local Content as prescribed in the Preferential Procurement Regulations, 2017 and the South African Bureau of Standards (SABS) approved technical specification number SATS 1286:2011 (Edition 1) and the Guidance on the Calculation of Local Content together with the Local Content Declaration Templates [Annex C (Local Content Declaration: Summary Schedule), D (Imported Content Declaration: Supporting Schedule to Annex C) and E (Local Content Declaration: Supporting Schedule to Annex C)].

1. General Conditions

- 1.1. Preferential Procurement Regulations, 2017 (Regulation 8) makes provision for the promotion of local production and content.
- 1.2. Regulation 8.(2) prescribes that in the case of designated sectors, organs of state must advertise such tenders with the specific bidding condition that only locally produced or manufactured goods, with a stipulated minimum threshold for local production and content will be considered.
- 1.3. Where necessary, for tenders referred to in paragraph 1.2 above, a two stage bidding process may be followed, where the first stage involves a minimum threshold for local production and content and the second stage price and B-BBEE.
- 1.4. A person awarded a contract in relation to a designated sector, may not sub-contract in such a manner that the local production and content of the overall value of the contract is reduced to below the stipulated minimum threshold.
- 1.5. The local content (LC) expressed as a percentage of the bid price must be calculated in accordance with the SABS approved technical specification number SATS 1286: 2011 as follows:

$$LC = [1 - x / y] * 100$$

Where

x is the imported content in Rand

y is the bid price in Rand excluding value added tax (VAT)

Prices referred to in the determination of x must be converted to Rand (ZAR) by using the exchange rate published by the South African Reserve Bank (SARB) at 12:00 on the date of advertisement of the bid as required in paragraph 4.1 below.

The SABS approved technical specification number SATS 1286:2011 is accessible on [http://www.thedti.gov.za/industrial development/ip.jsp](http://www.thedti.gov.za/industrial%20development/ip.jsp) at no cost.

- 1.6. A bid may be disqualified if this Declaration Certificate and the Annex C (Local Content Declaration: Summary Schedule) are not submitted as part of the bid documentation;

2. The stipulated minimum threshold(s) for local production and content (refer to Annex A of SATS 1286:2011) for this bid is/are as follows:

Description of services, works or goods Stipulated minimum threshold

<u>Steel construction Material</u>	<u>Components</u>	<u>Local Content Threshold</u>
Fabricated structural steel	Steel columns, Y10 steel rods, steel rafters	100%
Joining/connecting components	Gussets, cleats, stiffeners, splices, cranks, kink, doglegs, spacers, tabs and brackets	100%
Fasteners	Bolts, nuts, rivets and nails	100%
Sheets	IBR sheeting	100%

3. Does any portion of the goods or services offered have any imported content?

(Tick applicable box)

YES	<input type="checkbox"/>	NO	<input type="checkbox"/>
-----	--------------------------	----	--------------------------

- 3.1 If yes, the rate(s) of exchange to be used in this bid to calculate the local content as prescribed in paragraph 1.5 of the general conditions must be the rate(s) published by the SARB for the specific currency at 12:00 on 23 March 2018.

The relevant rates of exchange information is accessible on www.reservebank.co.za.

Indicate the rate(s) of exchange against the appropriate currency in the table below (refer to Annex A of SATS 1286:2011):

Currency	Rates of exchange
US Dollar	
Pound Sterling	
Euro	
Yen	
Other	

NB: Bidders must submit proof of the SARB rate (s) of exchange used.

4. Where, after the award of a bid, challenges are experienced in meeting the stipulated minimum threshold for local content the dti must be informed accordingly in order for the dti to verify and in consultation with the Accounting Officer / Accounting Authority provide directives in this regard.

LOCAL CONTENT DECLARATION
(REFER TO ANNEX B OF SATS 1286:2011)

LOCAL CONTENT DECLARATION BY CHIEF FINANCIAL OFFICER OR OTHER LEGALLY RESPONSIBLE PERSON NOMINATED IN WRITING BY THE CHIEF EXECUTIVE OR SENIOR MEMBER/PERSON WITH MANAGEMENT RESPONSIBILITY (CLOSE CORPORATION, PARTNERSHIP OR INDIVIDUAL)

IN RESPECT OF BID NO.

ISSUED BY: (Procurement Authority / Name of Institution):

NB

1 The obligation to complete, duly sign and submit this declaration cannot be transferred to an external authorized representative, auditor or any other third party acting on behalf of the bidder.

2 Guidance on the Calculation of Local Content together with Local Content Declaration Templates (Annex C, D and E) is accessible on http://www.thedti.gov.za/industrial_development/ip.jsp. Bidders should first complete Declaration D. After completing Declaration D, bidders should complete Declaration E and then consolidate the information on Declaration C. **Declaration C should be submitted with the bid documentation at the closing date and time of the bid in order to substantiate the declaration made in paragraph (c) below.** Declarations D and E should be kept by the bidders for verification purposes for a period of at least 5 years. The successful bidder is required to continuously update Declarations C, D and E with the actual values for the duration of the contract.

I, the undersigned, (full names),
 do hereby declare, in my capacity as
 of(name of bidder entity), the
 following:

- (a) The facts contained herein are within my own personal knowledge.
- (b) I have satisfied myself that
 - (i) the goods/services/works to be delivered in terms of the above-specified bid comply with the minimum local content requirements as specified in the bid, and as measured in terms of SATS 1286:2011; and

(c)The local content percentages (%) indicated below has been calculated using the formula given in clause 3 of SATS 1286:2011, the rates of exchange indicated in paragraph 4.1 above and the information contained in Declaration D and E which has been consolidated in Declaration C;

Bid price, excluding VAT (y)	R
Imported content (x), as calculated in terms of SATS 1286:2011	R
Stipulated minimum threshold for local content (paragraph 3 above)	
Local content %, as calculated in terms of SATS 1286:2011	

If the bid is for more than one product, the local content percentages for each product contained in Declaration C shall be used instead of the table above. The local content percentages for each

product has been calculated using the formula given in clause 3 of SATS 1286:2011, the rates of exchange indicated in paragraph 4.1 above and the information contained in Declaration D and E.

(d) I accept that the Procurement Authority / Institution has the right to request that the local content be verified in terms of the requirements of SATS 1286:2011.

(e) I understand that the awarding of the bid is dependent on the accuracy of the information furnished in this application. I also understand that the submission of incorrect data, or data that are not verifiable as described in SATS 1286:2011, may result in the Procurement Authority / Institution imposing any or all of the remedies as provided for in Regulation 13 of the Preferential Procurement Regulations, 2017 promulgated under the Preferential Policy Framework Act (PPFFA), 2000 (Act No. 5 of 2000).

SIGNATURE: _____

DATE: _____

WITNESS No. 1 _____

DATE: _____

WITNESS No. 2 _____

DATE: _____

CONSTRUCTION OF A STORE ON ERF 280, VOORTREKKER STREET, GOURITSMOND.

SPECIFICATIONS:

The Hessequa Municipality requires all prospective suppliers to provide the following

Description

- Construction of a store on erf 280, Gouritsmond.

Scope of work

CONSTRUCTION OF A STORE ON ERF 280, VOORTREKKER STREET, GOURITSMOND

The project entails the refurbishment of a new 121.6 m² store on erf 280, Voortrekker Street, Gouritsmond. All construction work must be done according to SANS 1200. Bidders need only to provide us with prices for labour, material and machinery (equipment). Progress will be approved by the Technical Department of Hessequa Municipality

The project comprise of the following :

Store

- Excavation for the casting of the concrete foundation under all brick walls
- Excavate 8 mass concrete footings (800 x 800 x 600mm) to a depth of 600mm from the final floor level.
- Cast 8 x (800 x 800 x 600mm) mass concrete footings with a base plate on each footing to Engineers details and specification.
- Cast 800mm x 300mm concrete foundation under all 230mm brickwork to Engineers details. Apply three Y10 steel rods. Foundation minimum 600mm under NGL (natural ground level).
- Fit 8 x (140 x 74 x 6mm) IPE steel columns on the casted concrete pad footings. Paint steel column with LZI primer and Evamarine top coat.
- Fit 6 x (140 x 74 x 6mm) IPE steel rafters at 15° from the columns.
- Fit 12 x (3mm) steel gusset plates at roof eaves and ridges (as per shoulder and crown detail).
- Fit (100 x 50 x 20 x 2.5mm) galvanized lipchannel purlins on IPE steel rafters according to Engineer's details and specification fixed to columns and rafters. Paint steel column with LZI primer and Evamarine top coat.
- Place zincalume IBR sheeting on the lipchannel purlins to cover the roof and the sides.
- Install 2 zincalume IBR sheeting sliding doors (5000 x 4200mm).
- Build the foundation walls up to floor level. Place 9inch brickforce every 3rd layer from the foundation level up to the floor level.
- Fill and compact inside the foundation walls in maximum layers of 170mm of groundfill up to underside of 50mm sandbed and compact to 100% Mod AASHTO.
- Place 50mm sandbed on top of the groundfill layer and compact to 100% Mod AASHTO.
- Place DPM on 50mm sandbed.
- Cast a (9810mm x9110) concrete floor 100mm thick with 30Mpa concrete and provide expansion joints at 3m centre to centre in both directions. Place 200x200x6mm (Ref 193)

reinforcing mesh overlapping 200mm, inside the floor at a level of 50mm above the filling.

- Set out brickwork with profile marked at four layers per 340mm which equals 85mm per layer.
- Place DPM between the first layer of all brickwork and the concrete floor.
- Apply DPC between all wall and floor surfaces.
- Place a 30mm screed on the concrete floor with a smooth hand finish.
- Installation of gutters on both sides of the roof's eaves, connected to a down pipe.

Ramp:

- Excavate foundation of the ramp to the same depth of the store foundation.
- Cast 2 x (800mm x 300mm x 2400mm) foundation in-line with the existing foundation for the ramp.
- Build rectangular bloudam brickwalls of 230mm thick on the ramps foundations up to the final level of the mass concrete footing. Place brickforce every 2nd layer.
- Fill the inside in layers of 170mm with groundfill and compact to 95% Mod AASHTO up to the underside of the ramp floor.
- Place DPM on groundfill layer.
- Cast a 9810mm x 2500mm x 100mm entrance ramp with 30MPa concrete and provide 3 expansion joints. Include a kicker as per detail attached. Place 200x200x6 mm reinforcing mesh (Ref 193) overlapping 200mm, inside the ramp at a level of 50mm above the filling.

Contractor responsibilities:

- Before the Contractor commences operations, he/she must discuss and have the approval of the Municipality concerned regarding the method he proposes to use for relocating or safe-guarding any services and existing works he may encounter during construction
- The Contractor shall be responsible for any damage to such existing services and works in the execution of this contract and shall reimburse the Municipality concerned for any repairs required and for damages
- All quantities to be verified by contractor and set out work to be done by contractor

Plant requirements:

- Contractor should have sufficient labour/machinery/plant/tools and equipment to complete job successfully
- Plant that is operated on or over units that have been laid shall be such that it does not cause damage to or disturbance of the units
- All fuel to be supplied by the contractor.
- All equipment and vehicles used by the Contractor shall be roadworthy at all times and all drivers and operators shall be in possession of valid drivers' licences

Materials requirements:

- The bricks as supplied shall be free from cracks that detract from their general appearance.
- At the point of manufacture no bricks shall have any chip of dimension exceeding 15 mm or covering more than 3% of the periphery of the surface that is intended to be exposed.
- No bricks shall have any protuberance of height exceeding 3 mm.
- The surface texture and colour of the bricks shall fall within the range of texture and colour represented by the manufacturer's approved samples.
- The colour shall penetrate to a depth of at least 5 mm below the wearing surface of each bricks and the coloured layer shall be integrally bound to the body of the unit
- Sand for bedding and jointing shall be free from substances that may be deleterious to blocks.
- The concrete floors shall be free from cracks.
- 30 Mpa Ready-mix concrete should be used for storeroom floor and entrance ramp.
- Bolts and nuts should be tied properly.
- All materials needed to complete the work shall be provided by the Contractor.

In addition, the grading of the sand shall confirm to that given in below:

Nominal Sieve size, (mm)	% passing
<i>9,52</i>	<i>100</i>
<i>4,75</i>	<i>95-100</i>
<i>2,36</i>	<i>80-100</i>
<i>1,18</i>	<i>50-85</i>
<i>0,600</i>	<i>25-60</i>
<i>0,300</i>	<i>10-30</i>
<i>0,150</i>	<i>5-15</i>
<i>0,075</i>	<i>0-10</i>

Pricing Schedule:

ITEM NO.	PAYMENT REFERS	DESCRIPTION	UNIT	QTY	RATE	AMOUNT
C	SABS	GENERAL				
	1200 C					
		<u>STORE</u>				
C1		Earthworks (foundation for storeroom floor)				
C1.1		Excavation for concrete foundation and footings (9340mmx900mmx800mm) x 2 (9810mmx900mmx800mm)	m ³	20.5		
C2		Concrete works (for mass concrete Foundation, footings and floor)				
C2.1		Cast 8 x (800 x 800 x 600mm) mass concrete footings with a base plate on each footing to Engineers details and specification. (detail attached)	m ³	3.1		
C2.2		Cast 800mm x 300mm concrete foundation under all 230mm brickwork to Engineers details (9340 x 800 x 300) x 2 (9810 x 800 x 300)	m ³	6.9		
C2.3		Cast 30MPa, 100mm thick, concrete floor and provide expansion joints at 3meter centre to centre in both directions. (9810mmx9110mmx100mm)	m ³	8.9		
C3		Steel works (Store structure)				
C3.1		Fit 8 x (140 x 74 x 6mm) IPE steel columns on the casted concrete pad footings	No.	8		
C3.2		Fit 6 x (140 x 74 x 6mm) IPE steel rafters at 15° from the columns	No.	6		
C3.3		Fit 12 x (3mm) steel gusset plates at roof eaves and ridges (as per shoulder and crown detail)	No.	12		
C3.4		Fit (100 x 50 x 20 x 2.5mm) galvanized lipchannel purlins on IPE steel rafters according	No.	19		

		to Engineer's details and specification				
C3.5		Place zincalume IBR sheeting on the lipchannel purlins to cover the roof and the sides	m ²	187.1		
C3.6		Install 2 zincalume IBR sheeting sliding doors (5000 x 4200mm)	NO m ²	2 42		
C4		Brickwork (for storeroom walls)				
C4.1		All brickwork shall be bloudam bricks Brick wall should be 230mm thick Build the foundation walls up to floor level (refer plan). Place 9inch brickforce every 3 rd layer from the foundation level up to the floor level.	m ²	119.7		
C6		Earthworks (for storeroom floor)				
		Fill and compact the inside of the foundation walls in maximum layers of 170mm of groundfill up to the underside of the 50mm sandbed and compact to 95% Mod AASHTO	m ³	58		
C7		DPM (for storeroom floor) Place DPM on groundfill layer(10000mmx9000mm)	m ²	90		
C8		Place 50mm sandbed on the groundfill layer and compact to100% Mod AASHTO (9810mmx9110mmx50mm)	m ³	4.5		

C9		Reinforcement for storeroom floor.				
		Place reinforcing steel mesh, overlapping 200mm, inside the concrete floor at a level of 50mm above the sandbed layer. 200mmx200mmx6mm (Ref 193) (9810mmx9110mm)	m ²	89.4		
C10		Concrete works for storeroom floor.				
		Cast 30MPa, 100mm thick, concrete floor and provide expansion joints at 3meter centre to centre in both directions. (9810mmx9110mmx100mm)	m ³	8.9		
C11		Place 30mm screed on concrete floor with a smooth hand finish.	m ³	2.7		

		<u>RAMP</u>				
C13		Earthworks (Foundation trenches for ramp)				
		Excavation				
		Excavate in all materials for trenches, backfill, compaction and dispose of all surplus/ material				
C13.1		Soft excavation by hand				
		Excavation for ramp's concrete foundation 2x(800mmx300mmx2500mm)	m ³	1.2		
C15		Concrete works (Foundation for ramp)				
C15.1		Cast 30MPa, 300mm thick, concrete foundation. 2x(800mmx300mmx2500mm)	m ³	1.2		

C16		Brickwork (for ramp)				
		All brickwork shall be "bloudam" type or similar bricks Brickwall should be 230mm thick and brickforce to be placed every 2 nd layer. 2x(2500mmx600mm)	m ²	6		
C17		Brickforce for ramp walls	m	20		
C18		Groundworks (for ramp)				
C18.1		Groundfill				
		Selected groundfill material to be placed and compacted to 95% Mod AASHTO in layers of 170mm up to underside of ramp floor.	m ³	6		
C19		DPM (ramp floor)				
C19.1		Place DPM on groundfill layer (9810mmx2500mm)	m ²	24.5		
C20		Reinforcement (for ramp)				

C20.1		Place reinforcing steel mesh, overlapping 200mm, inside the concrete floor at a level of 50mm above the groundfill layer. 200mmx200mmx6mm (Ref 193) (9810mmx2500mm)	m ²	24.5		
C21		Concrete works (for ramp floor)				
C21.1		Cast 30MPa, 100mm thick, concrete ramp floor with 3 x expansion joints (9810mmx2500mmx100mm), Include a kicker of 150mm as per attached detail(9810mmx200mmx150mm)	m ³	2.8		
		Total Amount				

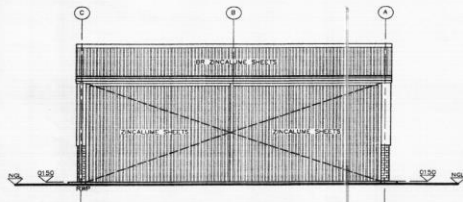
PLEASE INDICATE COMPLETION PERIOD

DELIVERY REQUIREMENTS:

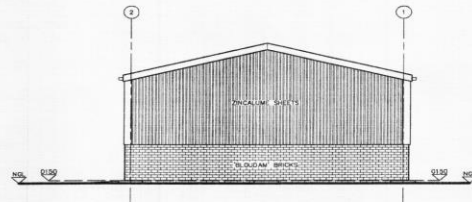
ERF 280

VOORTREKKER STREE

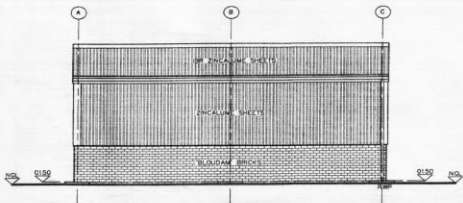
GOURITSMOND



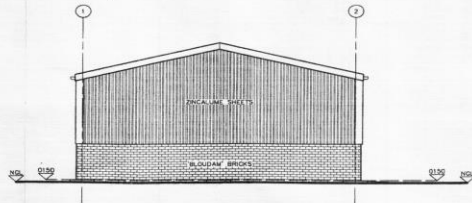
EAST ELEVATION
SCALE 1:100



NORTH ELEVATION
SCALE 1:100



WEST ELEVATION



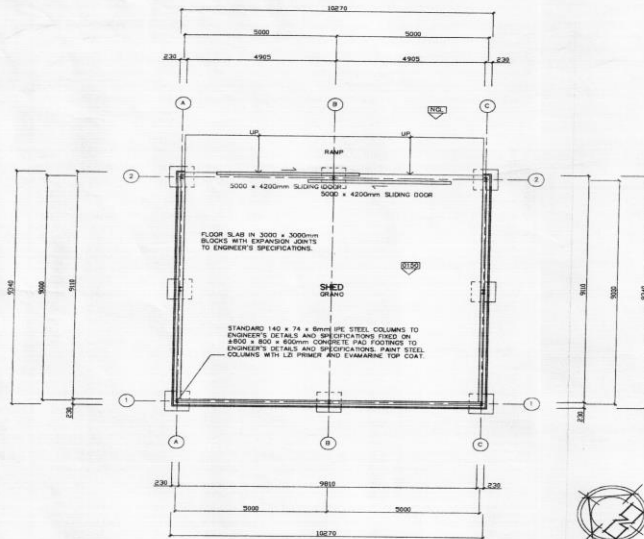
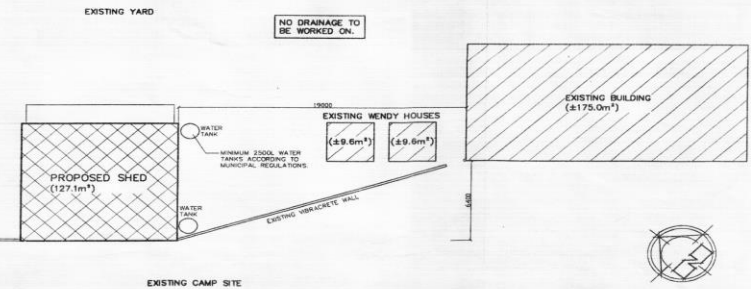
SOUTH ELEVATION
SCALE 1:100



SITE LA OUT
SCALE 1:200

VOORTREKKER STREET

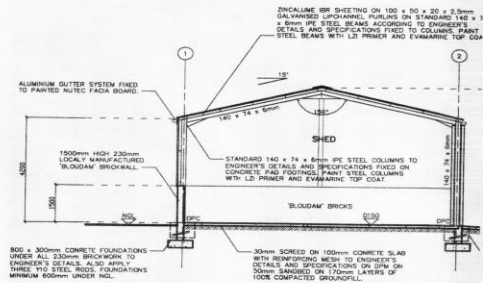
ERF 280
(41852.0m²)



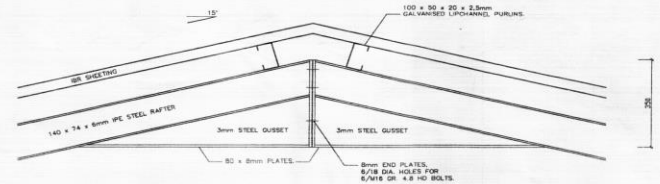
PLAN
SCALE 1:100

CONSTRUCTION NOTES:
SET-OUT BRICKWORK WITH PROFILE MARKED AT FOUR LAYERS PER 340mm WHICH EQUALS 85mm PER LAYER. FLOOR LEVEL MINIMUM TWO BRICK LAYERS ABOVE NGL. DAMPCOURSE BETWEEN ALL WALL AND FLOOR SURFACES.

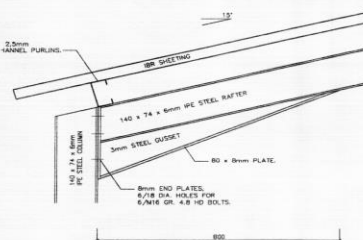
SET-OUT OF BUILDING FINALISED ON SITE SEE CONSTRUCTION COMMÉ



TYPICAL SECTION
SCALE 1:100

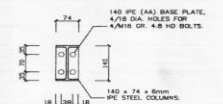


CROWN DETAIL
SCALE 1:10



SHOULDER DETAIL
SCALE 1:10

ALL STRUCTURAL STEEL DETAILS ACCORDING TO ENGINEER'S SPECIFICATIONS.



BASE PLATE DETAIL
SCALE 1:10